



## Addlogix Wireless PC2TV InternetVue Quick Start Guide

version 3.01 or later

### About InternetVue

InternetVue, wireless PC2TV device, is a graphics/video converter that enables you to wirelessly connect your desktop or laptop computer to any display such as a television, projector, or computer monitor.

This guide provides an overview of the installation. For complete installation and configuration instructions, see User's Guide.

Wireless PC2TV InternetVue



### INSTALLATION OVERVIEW

#### Requirements

A Computer with a minimum of the following:

- Pentium 4 or M > 1.5GHz processor (Dual-Core recommended)
- 512 MB RAM
- Supported Operating System:
  - Microsoft® Windows XP Home or Professional SP2
  - Windows 2000 Professional SP 4
  - Windows Vista™
- Wireless network card that supports 802.11g
- Appropriate VGA, DVI, Component, Composite cables
- Appropriate stereo audio cable

#### Installation Steps

1. Attach the PC2TV InternetVue unit to a television, projector, or monitor.
2. Install the InternetVue software from the CD.
3. Run the installed InternetVue application on the computer.

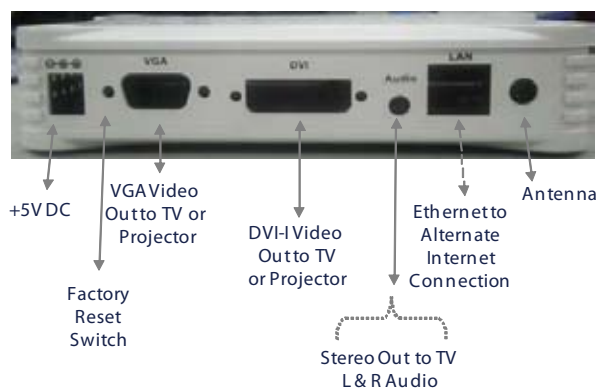
Note: Step 1 is not necessary if the PC2TV InternetVue unit is already attached to a television, projector, or computer monitor.

Note: Each installation step is elaborated in the following sections.

### Connecting InternetVue to a Television or Projector

#### InternetVue 2100, VGA/DVI Model

1. Connect a DVI or VGA cable to the appropriate DVI or VGA port on the PC2TV InternetVue unit.
2. Connect the audio cable to the device.
3. Connect the network cable from a broadband modem or router to the 10/100 port to enable Internet access (optional). (See the user guide for other methods for connecting to the Internet.)
4. Plug the power cable (+5V DC) into the wireless PC to TV Device and make sure the power to the attached television/projector/monitor is on.

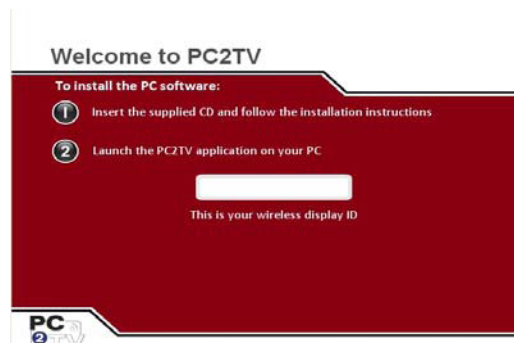


Note: You may have to change the TV Input setting on the television until you see the proper splash screen (see below). The TV Input setting is typically changed via the television's remote control.

#### Record SSID Information on the PC to TV Screen

After you attach the Wireless PC to TV Device to a television, projector, or computer monitor, the following PC 2 TV screen appears on the television/projector/monitor. Note the SSID information that appears in step 2

PC to TV Screen



## Installing InternetVue Software

To install PC2TV InternetVue software:

1. Load the CD that came with the PC-TV Device into the computer CD/DVD drive.
2. The software will automatically start to install after the user accepts the terms of the license agreement displayed.
3. Follow the prompts on the screen to install the software.
4. Click Finish or Reboot if prompted when the installation is complete.


Software Start Installation Screen

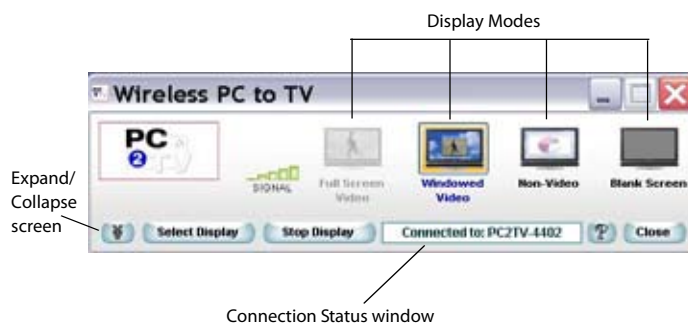


## Running InternetVue Software Application

Launching the PC2TV InternetVue Software

To launch the PC2TV InternetVue Software Application:

- Click the  icon on the Windows desktop, or
- Open the WindowsStart menu and select All Programs, Wireless PC to TV Device.



At startup, the software automatically scans for Wireless PC to TV Devices.

- If only one PC2TV InternetVue unit is found, the SSID of that device appears in the Connection Status window
- If multiple PC2TV InternetVue Devices are found, a Wireless Display List appears with the SSID of each device. Select the PC-TV device you want to connect to.
- Once connected, a configuration wizard will appear on the first application start to guide the user through initial setup.



Stop Projecting

To stop your computer from projecting to the television or projector, click the Stop Display button.

Disconnect from the PC2TV InternetVue

To stop projecting to the television or projector and disconnect from the PC2TV InternetVue, click the Close button.

The software closes and your computer is disconnected from the Wireless PC to TV Device.

**HELP** For complete instructions and troubleshooting assistance, refer to the User's Guide on the CD.